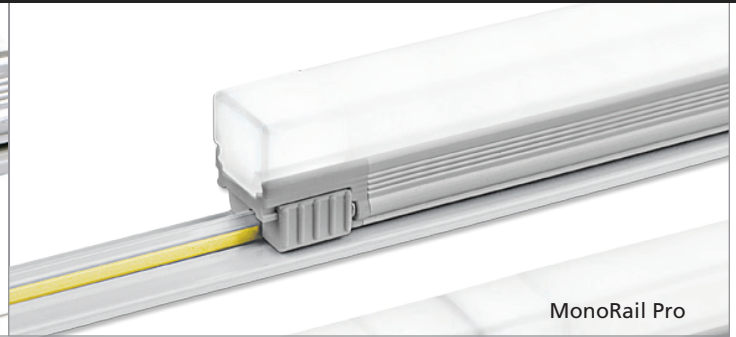


MonoRail



MonoRail Pro

PRODUCT FEATURES

- RedDot Award Winner 2014
- Ultra Slim Profile LED with Power Track
- Fixtures Snap on to Power Track with Seamless Illumination
- Compatible with 24V Constant Voltage DC Driver
- Dimming: 0-10V Forward or Reverse Phase
- Can Be Used As Power Track/Bus System for all DC FLX Collection
- Compatible Rail Mounted MonoRail Spot and MonoRail Spot HO
- MonoRail Pro Series: Title 24 Compliant
- Quick Ship*

PRODUCT SPECIFICATIONS

- Voltage: DC 24V
- Operating Temperature: 32-113°F (0-45°C)
- Lamp Life: 50,000 hrs / 70%
- Available Color: 2700K, 3000K, 3500K, 4000K, (6000K*)
- Standard: CRI/Ra>85 | Pro: CRI/RA>90
- Energy Efficiency Standard: 75 lm/W | Pro: 90 lm/W
- Beam Angle: Standard Lens 120° | Spot Free Lens 180°
- MonoRail Fixtures: Silver, (*Black)
- MonoRail Track: Black, Gray or White
- 5 year Warranty

* Pending factory availability

DIMENSIONS



MNR 1W 3.74" (95mm)



MNR 4W 11.26" (286mm)



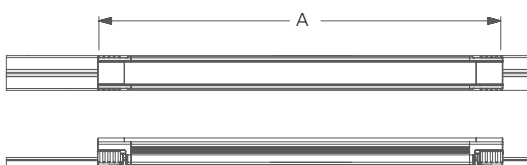
MNR 8W 22.5" (572mm)



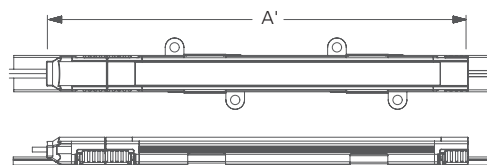
MNR-Rail (power track)

Model Number	Voltage Input (V)	Power Input (W)	A inches (mm)	A' inches (mm)	B inches (mm)	B' inches (mm)	C inches (mm)	C' inches (mm)	D inches (mm)	E inches (mm)
MNR1-(color)K-24V	DC 24	1.3	3.74" (95)	4.76" (121)	.6" (15.3)	1.2 (30.6)	.48 (12.3)	.58 (14.9)	.65 (16.6)	.5625 (14.3)
MNP1-(color)K-24V										.6875 (17.5)
MNR4-(color)K-24V	DC 24	4	11.26" (286)	12.28" (312)	.6" (15.3)	1.2 (30.6)	.48 (12.3)	.58 (14.9)	.65 (16.6)	.5625 (14.3)
MNP4-(color)K-24V										.6875 (17.5)
MNR8-(color)K-24V	DC 24	8	22.5" (572)	23.5" (598)	.6" (15.3)	1.2 (30.6)	.48 (12.3)	.58 (14.9)	.65 (16.6)	.5625 (14.3)
MNP8-(color)K-24V										.6875 (17.5)

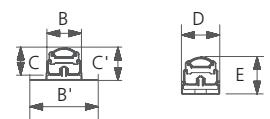
Fixture w/o connector



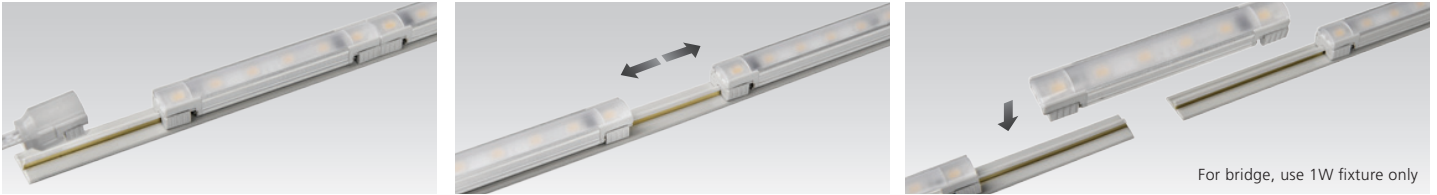
Fixture with connector



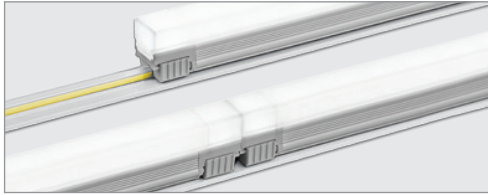
Dimensions with bracket and rail



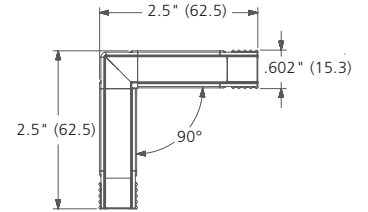
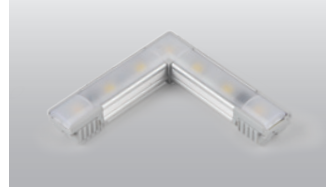
EASY CONNECTION



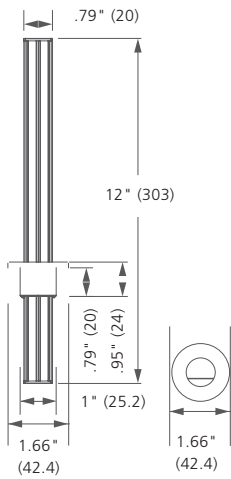
MONORAIL PRO - SPOT FREE



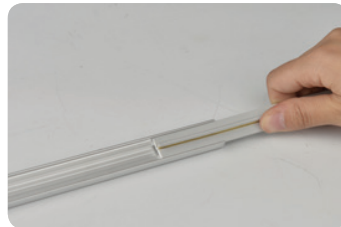
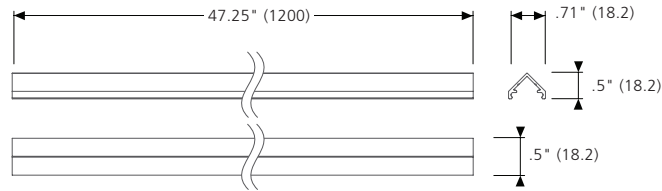
90° CONNECTING FIXTURE



MNR RAIL EXTRUSION POLE

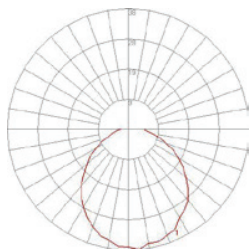


MNR-RAIL EXTRUSION CORNER

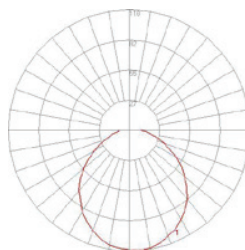


BEAM SPREADS

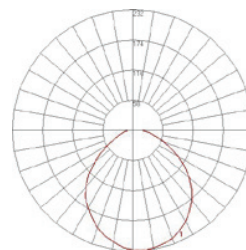
MNR 1W 4000K (99.9lm (Lamp), 37.4cd (Max intensity), 1W (Power))



MNR 4W 4000K (292.7lm (Lamp), 109.2cd (Max intensity), 4W (Power))



MNR 8W 4000K (584.8lm (Lamp), 231.8cd (Max intensity), 8W (Power))

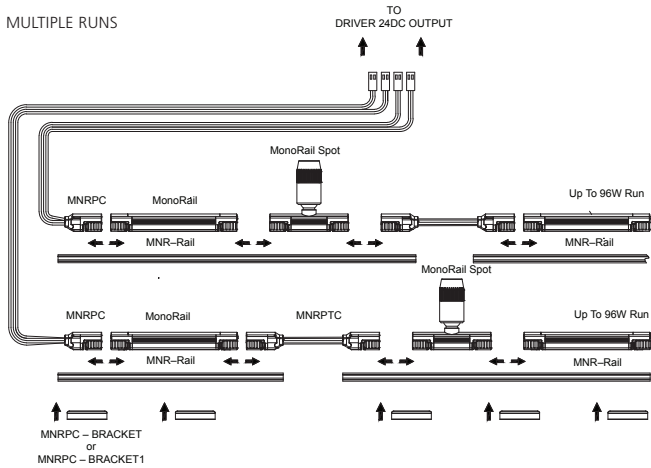


MONORAIL INSTALLATION

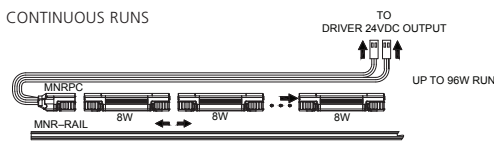
Can run up to 96W in one run

CAUTION:
TOTAL CONNECTED FIXTURES WATTAGE NOT TO EXCEED DRIVER WATTAGE

MULTIPLE RUNS

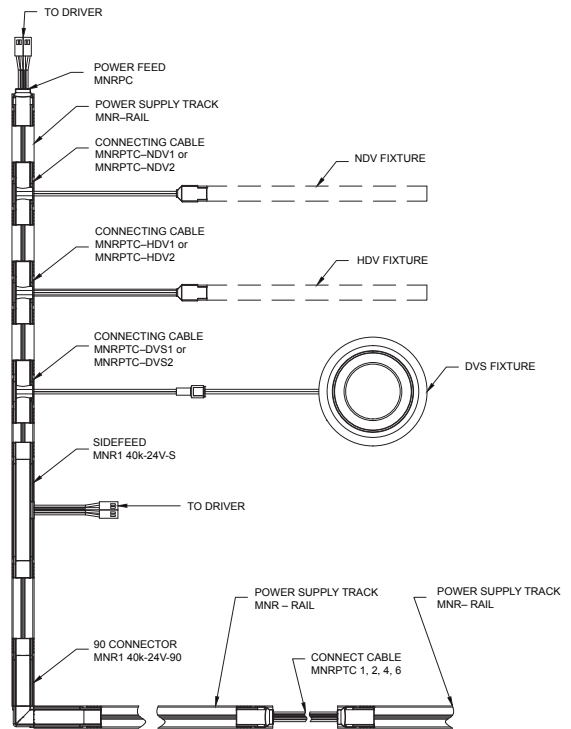


CONTINUOUS RUNS

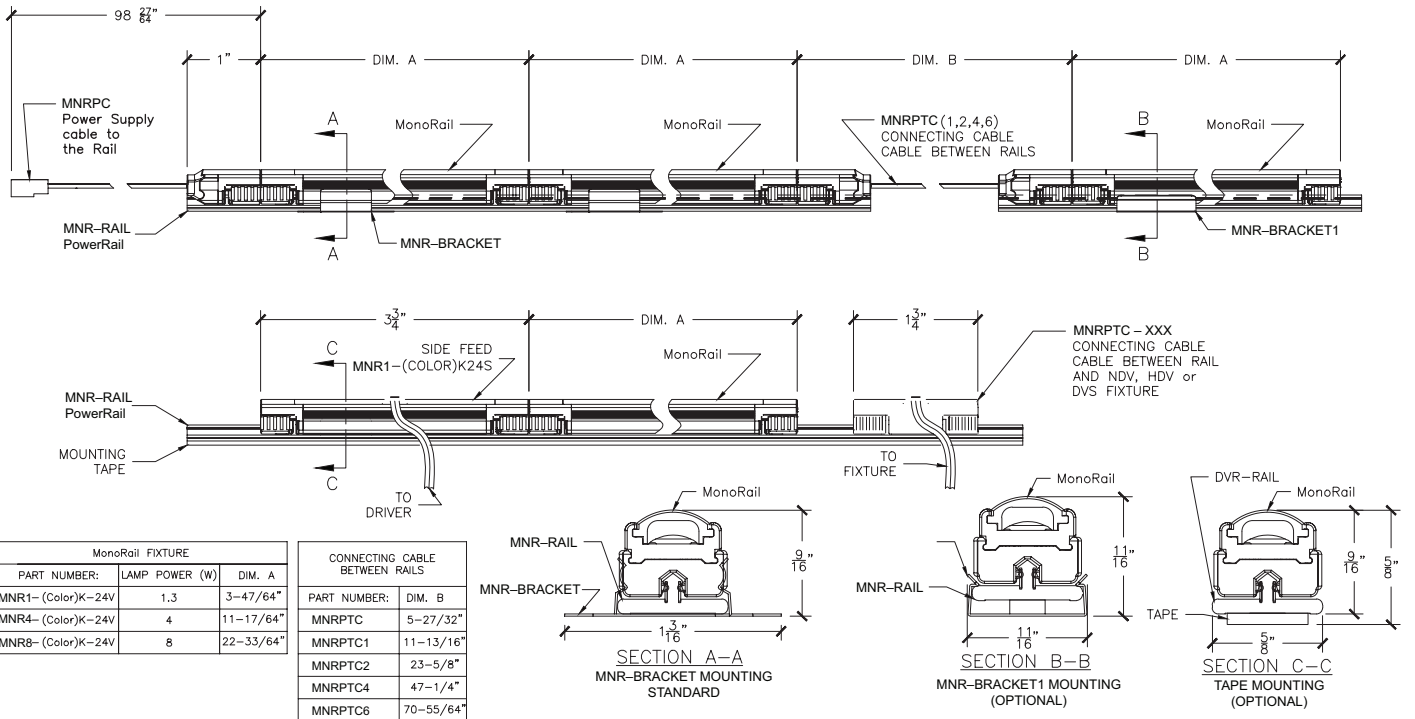


POWER RAIL INSTALLATION

CAUTION:
TOTAL CONNECTED FIXTURES WATTAGE NOT TO EXCEED DRIVER WATTAGE



INSTALLATION DIAGRAM



MonoRail FIXTURE		
PART NUMBER:	LAMP POWER (W)	DIM. A
MNR1-(Color)K-24V	1.3	3-47/64"
MNR4-(Color)K-24V	4	11-17/64"
MNR8-(Color)K-24V	8	22-33/64"

CONNECTING CABLE BETWEEN RAILS	
PART NUMBER:	DIM. B
MNRPTC	5-27/32"
MNRPTC1	11-13/16"
MNRPTC2	23-5/8"
MNRPTC4	47-1/4"
MNRPTC6	70-55/64"

CONNECTING CABLE BETWEEN RAIL AND NDV	
PART NUMBER:	CABLE LENGTH:
MNRPTC-NDV1	11-13/16"
MNRPTC-NDV2	23-5/8"

CONNECTING CABLE BETWEEN RAIL AND HDV	
PART NUMBER:	CABLE LENGTH:
MNRPTC-HDV1	11-13/16"
MNRPTC-HDV2	23-5/8"

CONNECTING CABLE BETWEEN RAIL AND DVS	
PART NUMBER:	CABLE LENGTH:
MNRPTC-DVS1	11-13/16"
MNRPTC-DVS2	23-5/8"

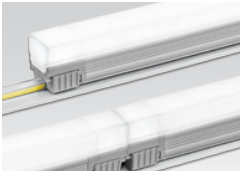
***Please Note**
MonoRail Pro height dimension with bracket and rail
11/16" (17.5mm)

COMPONENTS



MonoRail

- ___MNR1-(color)K-24V
- ___MNR1-(90color)K-24V
- ___MNR4-(color)K-24V
- ___MNR8-(color)K-24V



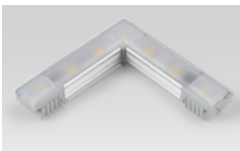
MonoRail Pro Spot Free

- ___MNP1-(color)K-24V
- ___MNP1-90-(color)K-24V
- ___MNP4-(color)K-24V
- ___MNP8-(color)K-24V



Sidefeed

- ___MNR1-(color)K-24V-S



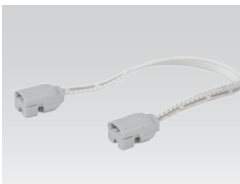
90° Connector

- ___MNR1-(color)K-24V-90



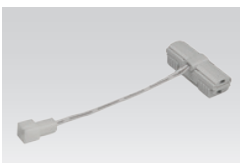
Power Feed

- ___MNRPC



Connecting Cable

- ___MNRPTC/XL (6')
- ___MNRPTC1/XL (1')
- ___MNRPTC2/XL (2')
- ___MNRPTC4/XL (4')
- ___MNRPTC6/XL (6')



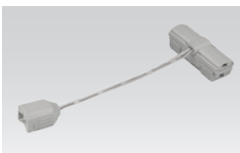
Connecting Cable

- ___MNRPTC-DVS1 (1')
- ___MNRPTC-DVS2 (2')



Connecting Cable

- ___MNRPTC-NDV1 (1')
- ___MNRPTC-NDV2 (2')



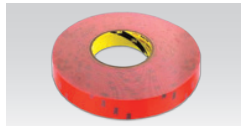
Connecting Cable

- ___MNRPTC-HDV1 (1')
- ___MNRPTC-HDV2 (2')



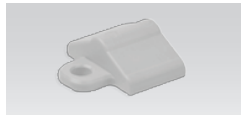
Power Supply Track

- ___MNR-Rail (20m) ~60'



Adhesive Tape

- ___Adhesive tape



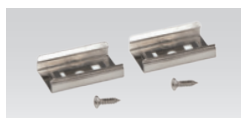
End Cap

- ___MNR-CAP
- Included with track



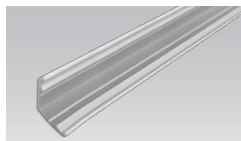
Mounting Brackets

- ___MNR-BRACKET
- Included with track



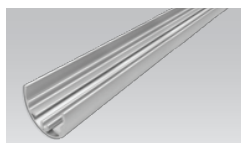
Mounting Brackets - Slim Style

- ___MNR-BRACKET1



MNR-Rail Extrusion Corner (4')

- ___MNR-EXC-SV (silver)
- ___MNR-EXC-BK (black)
- Without MNR-Rail



MNR-Rail Extrusion Pole (11.8")

- ___MNR-EXP-SV (silver)
- ___MNR-EXP-BK (black)
- With MNR-Rail



Dimming Interface

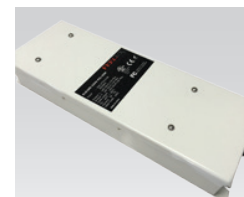
- Max. 100W (100W/CH, 1CH)
- 0 - 10V Signal
- ___FDC-L10

A larger selection of drivers are available including remote and hard wire drivers. Please consult factory.



LED Drivers

- with distributor and power cord (1800mm)
- ___FLC30-24V/XL
- ___FLC75-24V/XL



Hard Wire Driver

- (90V to 300V)
- ___XLAV80(L)-124V-SSB
- ___XLD200-224V-FCL-DIM
- ___XLD75-124V-FC



Justin Drivers

- ___481-24DCR
- ___483-24DCR-277
- ___961-24DCR
- ___963-24DCR-277
- ___C2240-24DCR
- ___C2240-24DCR-277



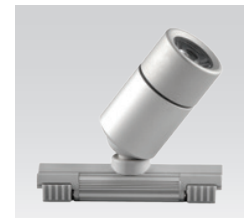
12 Port Hub

- ___D12P-HUB
- Included with Cord and Plug drivers. Order separately for Hard Wire or 3rd Party Drivers



MonoRail Spot

- ___MRS1-(COLOR)K-24V-SV-15
- ___MRS1-(COLOR)K-24V-BK-15
- ___MRS1-(COLOR)K-24V-SV-30
- ___MRS1-(COLOR)K-24V-BK-30
- ___MRS1-(COLOR)K-24V-SV-35
- ___MRS1-(COLOR)K-24V-BK-35



MonoRail Spot HO

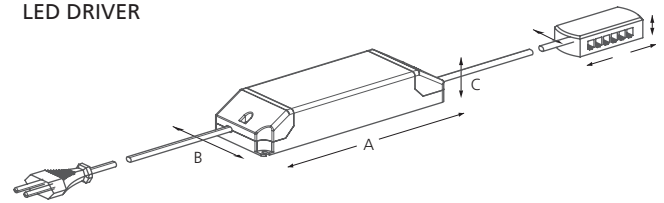
- ___MRS3-(COLOR)K-24V-SV-25
- ___MRS3-(COLOR)K-24V-BK-25
- ___MRS3-(COLOR)K-24V-SV-45
- ___MRS3-(COLOR)K-24V-BK-45
- ___MRS3-(COLOR)K-24V-SV-60
- ___MRS3-(COLOR)K-24V-BK-60

DRIVER OPTIONS

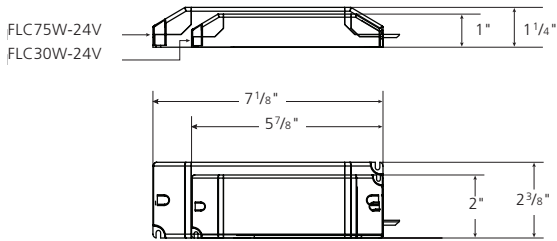
Consult factory for additional options.

Model Number	A inches (mm)	B inches (mm)	C inches (mm)
FLC30-24V/XL	5.9" (150)	1.6" (41)	1.22" (31)
FLC75-24V/XL	7.08" (180)	2.36" (60)	1.25" (32)
XLD75-124V-FC	11.22" (285)	2.94" (74.7)	1.63" (41.5)
XLD200-224V-FCL-DIM	12.28" (312)	4.46" (113.5)	2.28" (60.5)
XLAV80(L)-124V-SSB	14.4" (366)	4.48" (124)	1.7" (43)

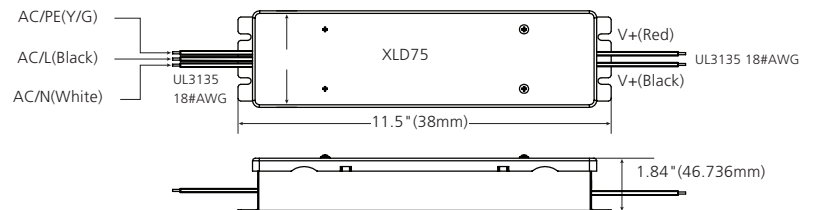
LED DRIVER



FLC PLUG-IN DRIVER SIZES

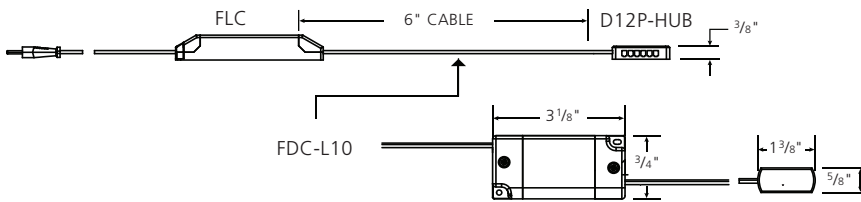


HARDWIRE 75W LED DRIVER



DIMMING OPTIONS

LED DRIVER



SPECIFICATION GUIDE: NOT TO BE USED FOR ORDERING. The Specification Guide is intended solely to ensure that all options are considered.

MODEL	COLOR	MOUNTING	CONFIGURATION	RUN LENGTH	DRIVER	CONTROLS	VOLTAGE
MNR-Standard MNP-Pro	27K -2700K 30K -3000K 35K -3500K 40K -4000K 60K -6000K*	TAP - Adhesive Tape BKT Side Fixing BK1 Center Fixing	S -Straight V -Varies**	ft. RUN LENGTH IN FEET Fill out for every run section	CP - Cable/Plug HW - Hard Wire TD - 3rd Party Drivers Consult Factory	NDM Non-Dim IDM Inline Dim FDC 0-10V Interface FPH Forward Phase RPH Reverse Phase	100V 120V 230V 277V
				**DRAWINGS AND RUN LENGTH REQUIRED			