

Butt-On Medium Bi-Pin Fluorescent Lamp Lampholders

APPLICATION and PERFORMANCE SPECIFICATION

Description: Butt-On lampholders for T8/T12 Lamps

- **Body:** PC Rotor PBT GF
- **Base or lateral push-in terminals:** 18AWG
- 660W / 600V
- UL Temperature Rating T 120

Type	Ref. #	Mounting	Spring Adj.	Starter Holder	Internal Shunting	Drawing	Weight (g)	Packing Unit
47100	101674	Screw	-	-	-	A	5	1000 pcs
47102	101681	Screw	X	-	-	A	6	1000 pcs
47200	101706	Screw	-	X	-	B	9	1000 pcs
47202	101708	Screw	X	X	-	B	10	1000 pcs
47105	101685	Pin	-	-	-	C	5	1000 pcs
47106	101690	Pin	X	-	-	C	6	1000 pcs
47205	101712	Pin	-	X	-	D	9	1000 pcs
47206	101716	Pin	X	X	-	D	10	1000 pcs
47500	101738	Screw	-	-	-	E	5	1000 pcs
47502	101740	Screw	X	-	-	E	5.5	1000 pcs
47600	101765	Screw	-	X	-	F	8	1000 pcs
47504	101745	Tab	-	-	-	G	5	1000 pcs
47605	101769	Pin	-	X	-	H	8	1000 pcs
47606	101773	Pin	X	X	-	H	8.5	1000 pcs

Safety:

- cUL_{US} listed - Indoor Use (E110363)
- ENEC

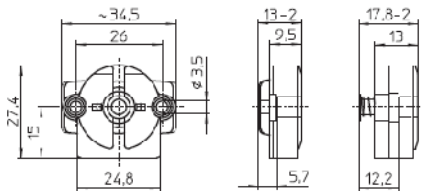


Performance:

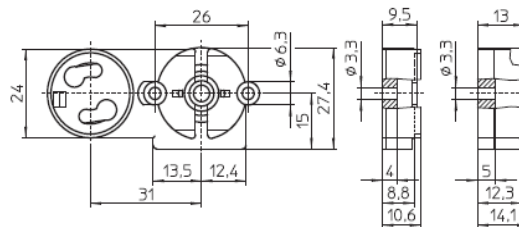
- Meets ANSI Standard C81.62-2009
- Meets IEC Standard 60400
- Lampholders meet IP20 standard except were otherwise noted

Warranty:

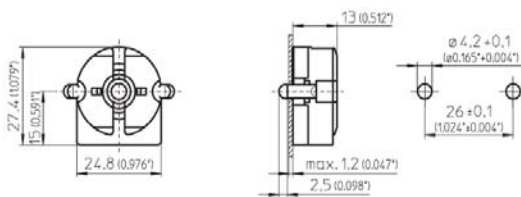
Universal Lighting Technologies warrants to the purchaser that each lampholder will be free from defects in material or workmanship for a period of 3 years from date of manufacture when properly installed and under normal conditions of use. Call **1-800-BALLASTx800** for technical assistance.



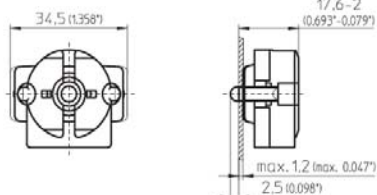
Drawing A

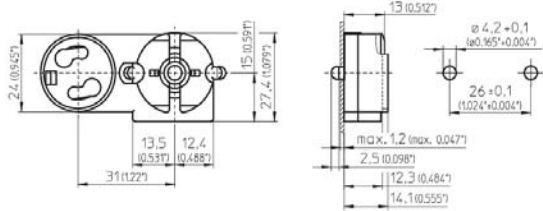


Drawing B

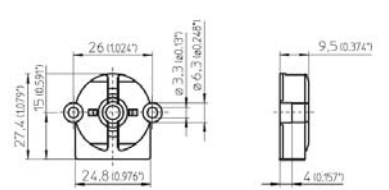


Drawing C

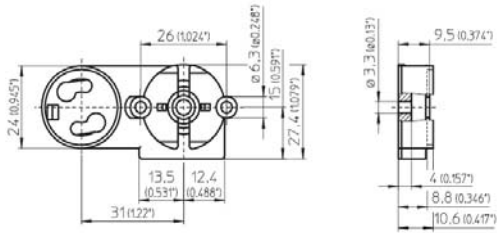
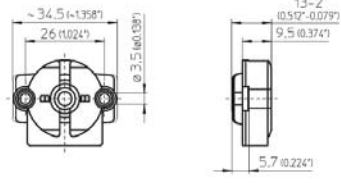
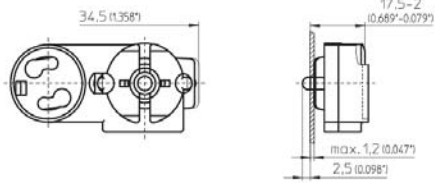




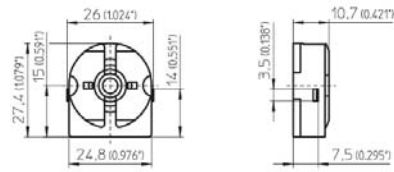
Drawing D



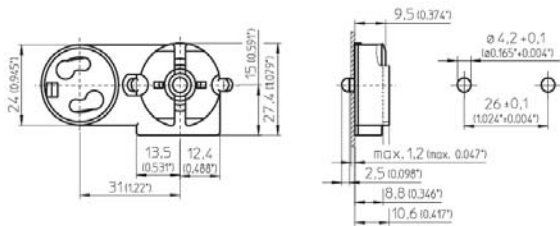
Drawing E



Drawing F



Drawing G



Drawing H

