

M9-U Series AC-Dimm[®]

Product Specifications

ANZ#: Z207a, June 1, 2014

High Power Constant Current LED Driver	
Total Power	9 Watts max.
Input Voltages	110 ~ 277VAC
Number of Outputs	One

SPECIAL FEATURES

- Compact size maximizes design flexibility.
- 2.78" (L) x 1.36" (W) x 0.98" (H)
- Fully potted, suitable for dry and damp location applications
- Dimmable, compatible with Electronics Low Voltage (ELV) Dimmer
- UL8750 Class 2 and CE compliant
- Wide selection of pre-adjusted C/C outputs

ENVIRONMENTAL

Operating temperature:	-20 to +50 °C
Storage temperature:	-40 to +85 °C
Humidity (Non-Condensing):	5% to 95%
Cooling:	Convection
Vibration Frequency:	5 to 50 Hz
MTBF:	>500,000 Hours at full load and 25°C ambient conditions (MIL-217F)



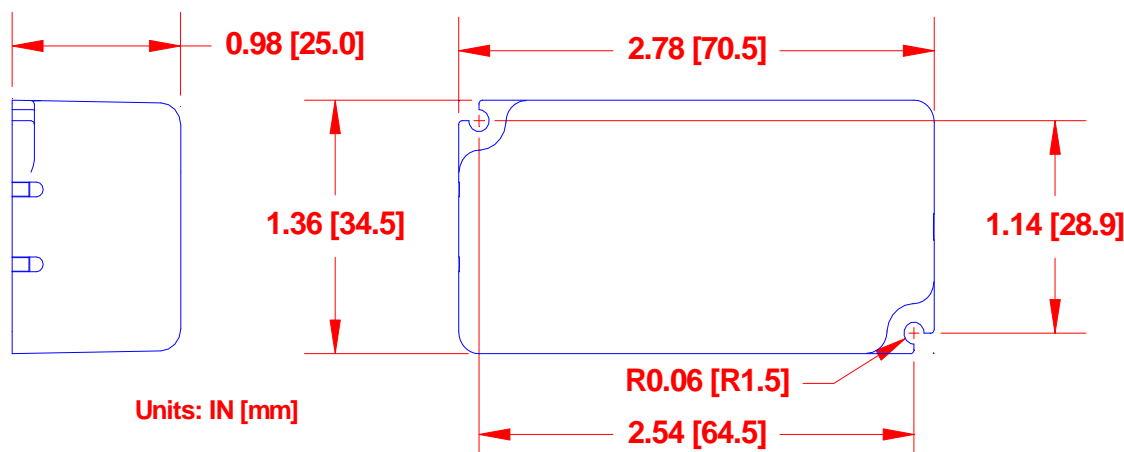
SPECIFICATIONS :

Input Range : 110 ~ 277 / 0.3~0.15A / 47~63Hz	Power Factor: > 0.97 at full load, 115VAC or 230VAC
DC Output Range : Refer to Model selection table	Operation Temp. : -20°C ~ +50°C , Tc : 80 °C
Efficiency : 87% Typical	Storage Temp. : -40°C ~ +85°C
Output Current Regulation : ±5%	MTBF(@25°C) : >100,000 Hours, MIL-217F
Protection : OCP, SCP, OVP – Auto Recovery	Regulation Compliance: UL8750, EN61347, EN55015, EN61547
Dimming : AC Phase – trailing-edge compatible only	Dimension: 2.78" (L) x 1.36" (W) x 0.98" (H)

MODEL

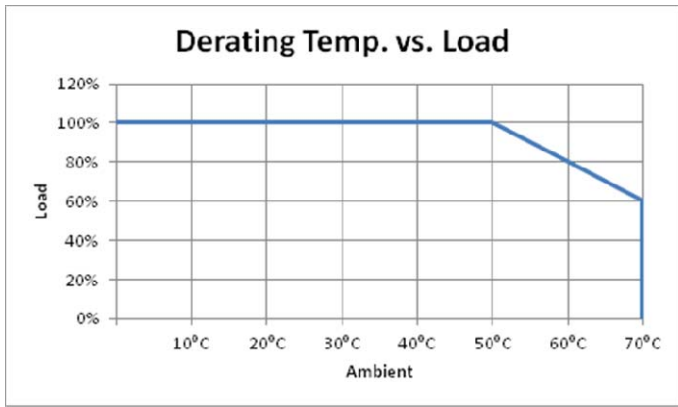
Model Number	DC Output (Vf)	Max. Output	Model Number	DC Output (Vf)	Max. Output
M9-U12-0750	9 ~ 12 VDC	750 / 9.0	M9-U36-0250	26 ~ 36 VDC	250 / 9.0
M9-U18-0500	12 ~ 18 VDC	500 / 9.0	M9-U42-0220	33 ~ 42 VDC	220 / 9.0
M9-U24-0375	16 ~ 24 VDC	375 / 9.0	M9-U48-0190	40 ~ 52 VDC	190 / 9.0
M9-U30-0300	23 ~ 30 VDC	300 / 9.0			

MECHANICAL SPECIFICATION : M9-UYY-ZZZZ-XP

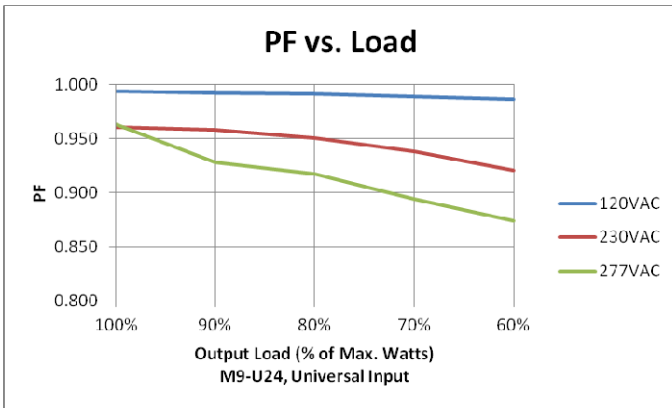


Note: "-XP" is an optional feature. When ordered with "-XP", the maximum height is 0.94" (24mm)

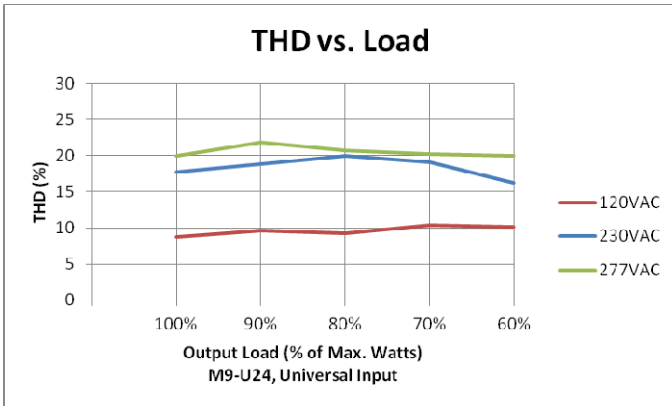
De-rating Temp. vs. Load



Power Factor vs. Load



THD vs. Load



Efficiency vs. Load

