

2G11 Accessories

APPLICATION and PERFORMANCE SPECIFICATION

Description: Accessories for 2G11 lamps

Type	Ref. #	Mounting Type	Lamp Type	Material	Height	Mounting	Diagram	Weight (g)	Packing Unit
97516	105824	Bracket	2G11	PC, White	24mm	Oblong holes for M4 screws	A	3.7	500
97490	105775	Lamp Foot	2G11	PC, White	17.5/20.5/23.5mm	Push-fit foot for $\varnothing 5.5\text{mm}$ up to 1mm thick	B	0.4	500
35761	105931	Lamp Foot	2G11	PC, White	31/34/37mm		B	0.7	500
97492	105777	Lamp Support	2G11	PC, Clear UV	-		B	1.3	500
97492	106417	Lamp Support	2G11	PC, White UV	-		B	1.1	500
36060	108878	Lamp Support	2G11	PC, White UV	15mm		C	0.7	500
93058	509520	Lamp Support	2G10/2G11	SS	21mm	Push fit for $\varnothing 5.5\text{mm}$	D	1.5	500
93059	509519	Lamp Support	2G10/2G11	SS	21mm	Push fit for 8.5x10.5mm	D	1.5	500
36061	101497	Lamp Support	2G11	PC, Clear UV	20.8mm	Split pins 0.6-1mm thickness	E	4	500
97638	105981	Lamp Support	2G10/2G11	PC, White UV	21	Push fit for 8.5x10.5mm	F	1.3	500
97639	105983	Lamp Support	2G10/2G11	PC, White UV	21	Split pins 0.6-1mm thickness	F	1.3	500

Physical Parameters

• Please see drawings for dimensions



Warranty:

Universal Lighting Technologies warrants to the purchaser that each lampholder will be free from defects in material or workmanship for a period of 3 years from date of manufacture when properly installed and under normal conditions of use. Call **1-800-BALLASTx800** for technical assistance.

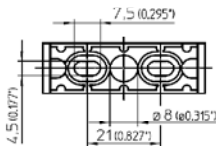
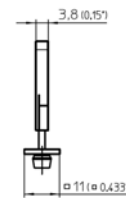
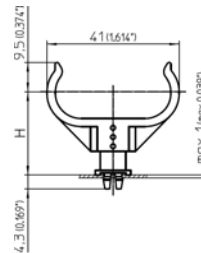
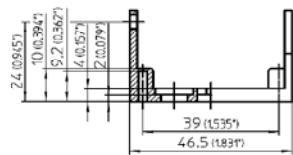


Diagram A

Diagram B

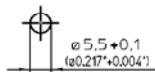
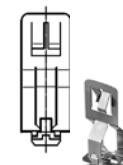
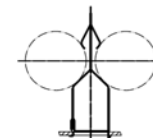
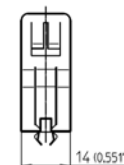
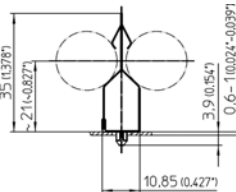
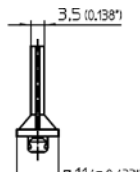
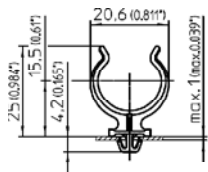


Diagram C

Diagram D

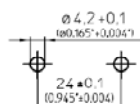
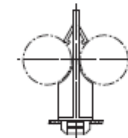
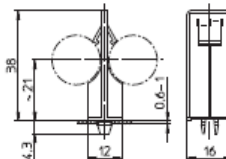
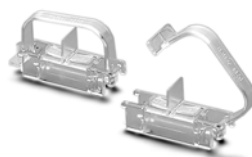
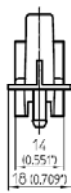
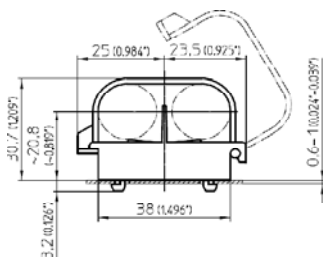


Diagram E

Diagram F