



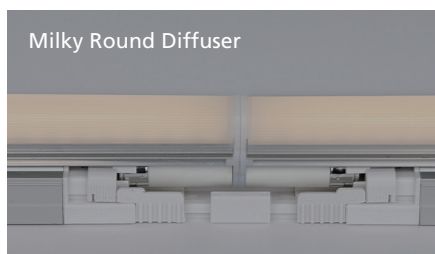
PRODUCT FEATURES

- Seamless Illumination
- Multiple LED Lamp Lens Options
- Removable LED Lamp for Quick Maintenance
- Line Voltage Integral Driver
- Compatible with Fluorescent Seamless Series Accessories
- Dimming with Accessories: 0-10V
- Easy Plug-&-Play Installation
- Quick Ship*

PRODUCT SPECIFICATIONS

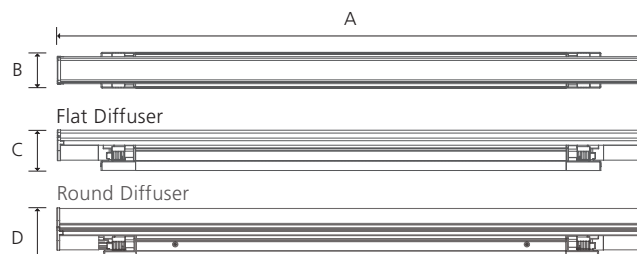
- Voltage: AC 120-230V
For 277V Refer to Factory for M20 Series
- Operating Temperature: 32-113°F (0-45°C)
- Lamp Life: 50,000 hrs
- Available Color: 2700K, 3000K, 3500K, 4000K, 6000K*
- CRI/Ra>85
- Energy Efficiency: 75lm/W – 375lm/ft
- Degree of Protection IP20
- Optics: 120° or 220° Distribution (See Lens Options)
- Powder Coated Finish (Silver)
- 5 year warranty

* Pending factory availability

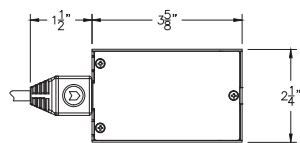
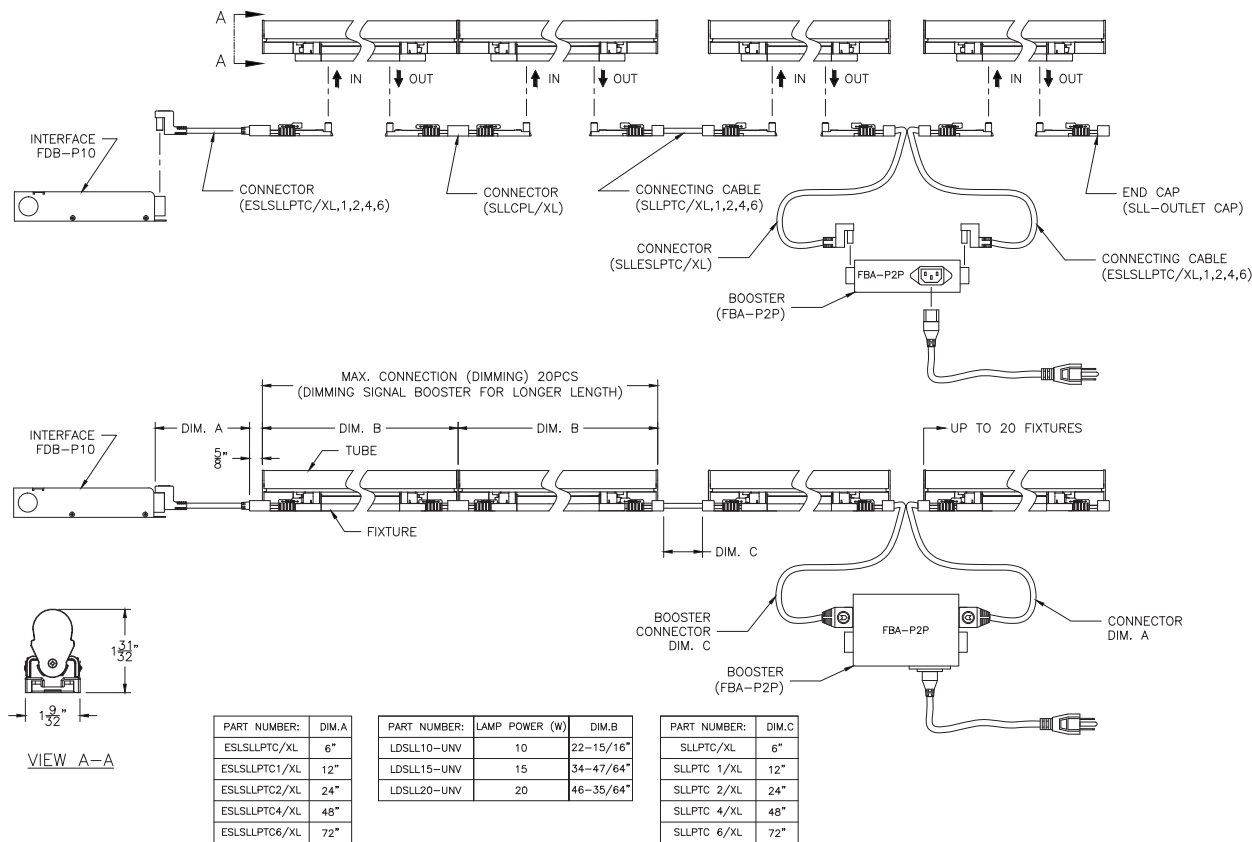


DIMENSIONS

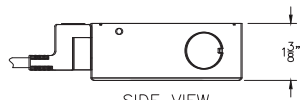
Model Number	Voltage Input (V)	Power Input (W)	A inches (mm)	B inches (mm)	C inches (mm)	D inches (mm)
LDSLL10-UNV	AC 120-230	10	22.95" (583)	1.3" (33)	1.5" (38)	1.97" (50)
LDSLL15-UNV	AC 120-230	15	34.75" (883)	1.3" (33)	1.5" (38)	1.97" (50)
LDSLL20-UNV	AC 120-230	20	46.55" (1183)	1.3" (33)	1.5" (38)	1.97" (50)



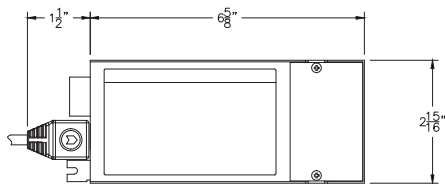
FIXTURES AND ACCESSORIES DIMENSIONS



TOP VIEW
METAL HARD WIRE BOX: MHWB-ESL



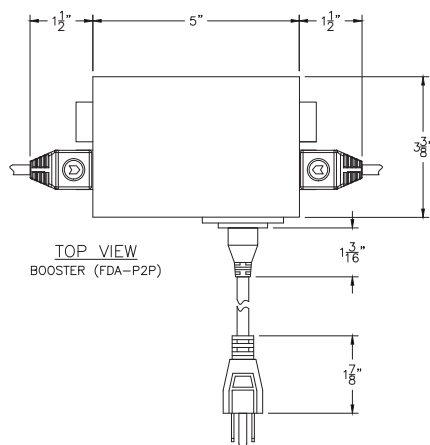
SIDE VIEW
METAL HARD WIRE BOX: MHWB-ESL



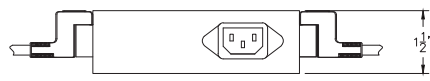
TOP VIEW
INTERFACE (FDB-P10 0-10V, 1-10V)
INTERFACE (FDB-P1H PHASE TO PWM TRANSLATOR)



SIDE VIEW

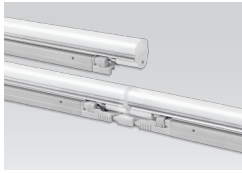


TOP VIEW
BOOSTER (FDA-P2P)



SIDE VIEW
BOOSTER (FDA-P2P)

COMPONENTS



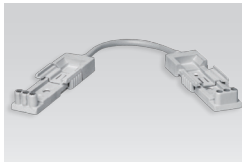
Fixture

- ___ LDSLL10-UNV
- ___ LDSLL15-UNV
- ___ LDSLL20-UNV



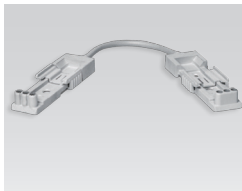
LED Tube

- ___ LFBL10-(color)K-FC
- ___ LFBL15-(color)K-FC
- ___ LFBL20-(color)K-FC
- ___ LFBL10-(color)K-FF
- ___ LFBL15-(color)K-FF
- ___ LFBL20-(color)K-FF
- ___ LFBL10-(color)K-RM
- ___ LFBL15-(color)K-RM
- ___ LFBL20-(color)K-RM



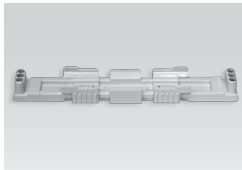
Connecting Cable

- ___ SLLPTC/XL 6"
- ___ SLLPTC1/XL 1'
- ___ SLLPTC2/XL 2'
- ___ SLLPTC4/XL 4'
- ___ SLLPTC6/XL 6'



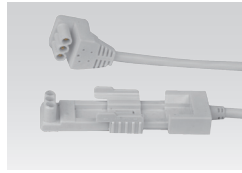
Connector to Booster

- ___ SLLESLPTC/XL 6"
- ___ SLLESLPTC1/XL 1'
- ___ SLLESLPTC2/XL 2'
- ___ SLLESLPTC4/XL 4'
- ___ SLLESLPTC6/XL 6'



Direct Connector

- ___ SLLCPL/XL



Connecting Cable

- ___ ESLSLLPTC/XL 6"
- ___ ESLSLLPTC1/XL 1'
- ___ ESLSLLPTC2/XL 2'
- ___ ESLSLLPTC4/XL 4'
- ___ ESLSLLPTC6/XL 6'



Hard Wire Box

- ___ MHWB-ESL



End Cap

- ___ SLL-CAP/XL
- Included with fixture



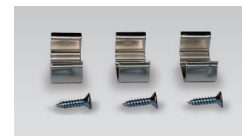
Dimming Interface

- ___ FDB-P10
- 0-10V/1-10V to PWM



2 Channel Booster / 10Pcs ea.

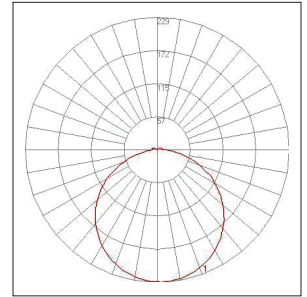
- ___ FBA-P2P



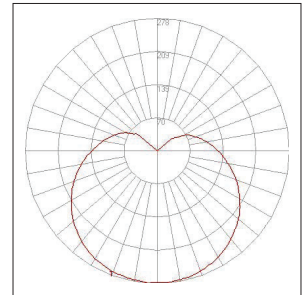
Mounting Brackets

- ___ MSLL-bracket (A)
- ___ MSLL-bracket (B)
- Included with fixture

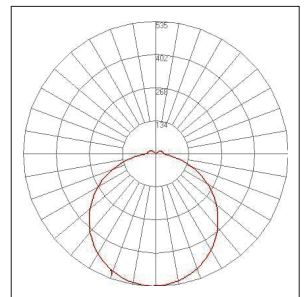
BEAM SPREADS



LDSLL10-UNV – 725.2lm (Lamp),
228.7cd (Max intensity), 10W (Power)



LDSLL15-UNV – 1,310lm (Lamp),
277.3cd (Max intensity), 15W (Power)



LDSLL20-UNV – 1,678.1lm (Lamp),
534.8cd (Max intensity), 20W (Power)

SPECIFICATION GUIDE: NOT TO BE USED FOR ORDERING. The Specification Guide is intended solely to ensure that all options are considered.

MODEL	COLOR	LENS	MOUNTING	CONFIGURATION	RUN LENGTH	POWER/DIM	VOLTAGE
LDSLL					ft.		
LDSLL	27K -2700K 30K -3000K 35K -3500K 40K -4000K 60K -6000K	FC -Flat Clear FF -Flat Frosted RM -Round Milky	STD - Flat Brackets Included BK1 -Sliding Brackets	S -Straight V -Varies*	RUN LENGTH IN FEET Fill out for every run section *DRAWINGS AND RUN LENGTH REQUIRED	CP - Cable/Plug HW - Hard Wire ZT - 0-10V Interface	120-230V