

# FLUORESCENT LAMPHOLDERS MEDIUM BI-PIN G13 FOR T8 SPACING / T5 LAMPS

E23

**FLT8 / T5 SERIES** T8 to T5 Offset Socket - to go from T8 spacing and use a T5 Lamp



G5

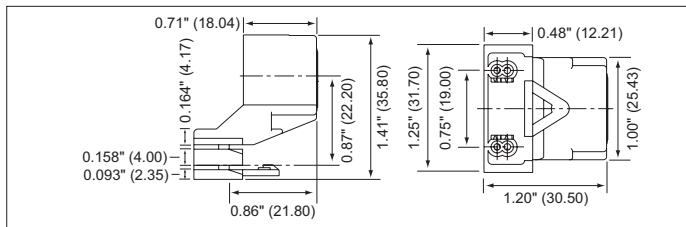
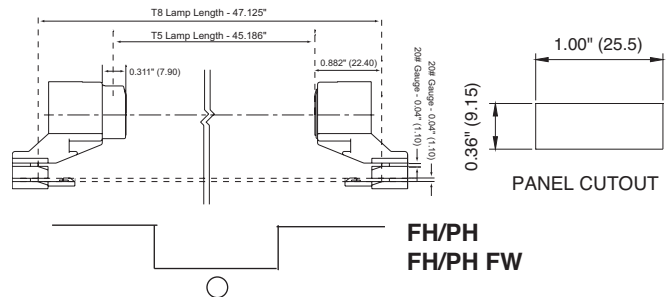
- Made from Polycarbonate, rated 110°C
- Phosphor Bronze contacts
- Maintains lamp axis from T8 to T5 on low slot
- Has fixed and plunger end to allow for lamp length tolerances
- Rotary lock lampholders assure lamps do not come out until returned to unlocked position
- Quick contact push in wire terminals for 18 AWG solid or bonded copper wire, stripped 7/16"

- Ideal in applications where hard tooling new socket plates would be expensive or the quantity required would not be justified
- Ideal for relamping existing fixtures in ceilings using the existing socket bars
- Two wire ports per terminal
- Rated 660W, 600V
- UL listed, CSA approved
- Patent pending
- Samples are available to try in your applications, please contact our office
- \* Note: May not fit in all applications; covers may require notched area to fit.

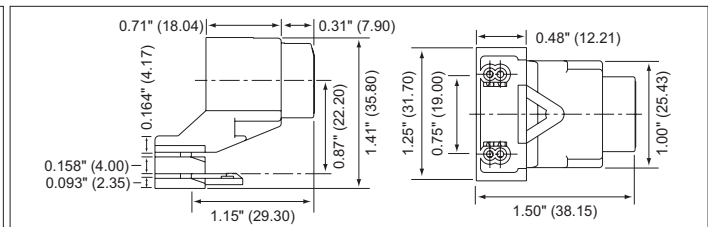


**FLT8/T5-FH:** Fixed End

**FLT8/T5-PH:** Plunger End

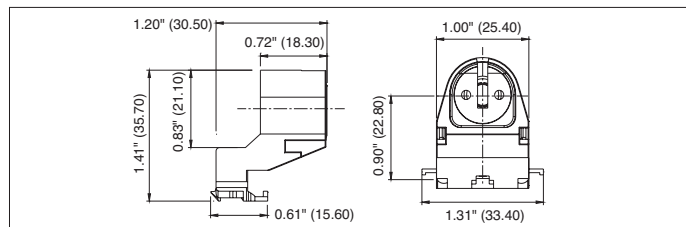


**FLT8/T5-FH**

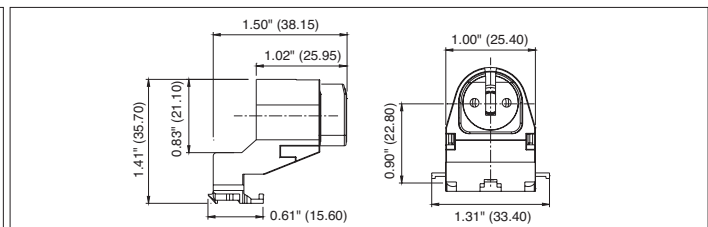


**FLT8/T5-PH**

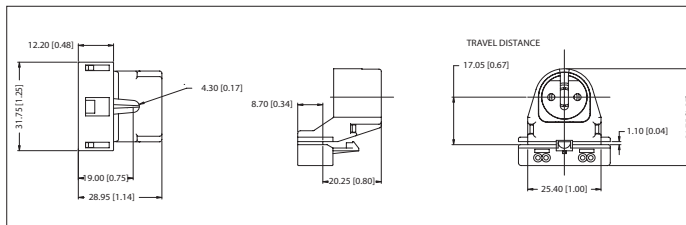
\* Add "-S" after product code for internal shunted version



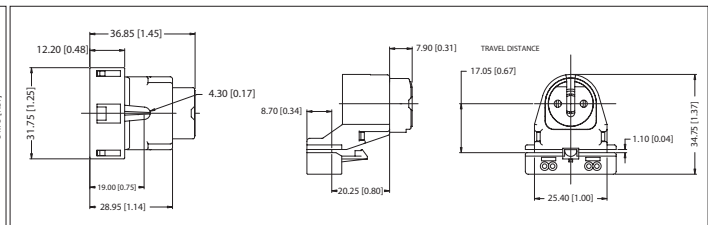
**FLT8/T5-FH-BSI (BOTTOM SNAP IN)**



**FLT8/T5-PH-BSI (BOTTOM SNAP IN)**



**FLT8/T5-FH-FW (FRONT WIRES)**



**FLT8/T5-PH-FW (FRONT WIRES)**

FOR MORE INFORMATION PLEASE CALL 1-800-661-9610 (HEAD OFFICE) 1-888-762-5384 (USA)

PLEASE CONSULT THE FACTORY FOR MORE PRODUCTS AND CUSTOMIZATION.  
PRODUCT DETAILS AND SPECIFICATIONS ARE SUBJECT TO CHANGE WITHOUT NOTICE.