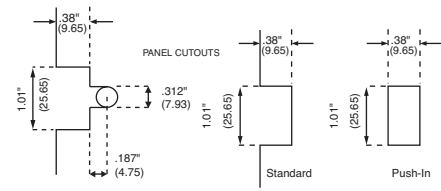


FLUORESCENT LAMPHOLDERS MEDIUM BI-PIN G13 FOR T-8 / T-12 LAMPS

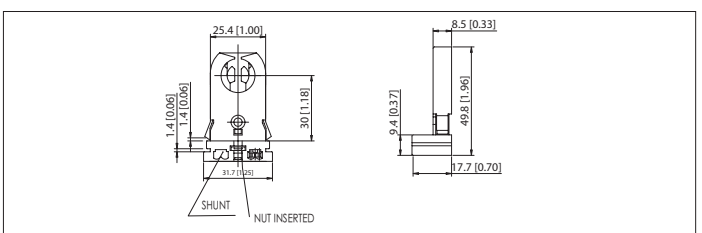
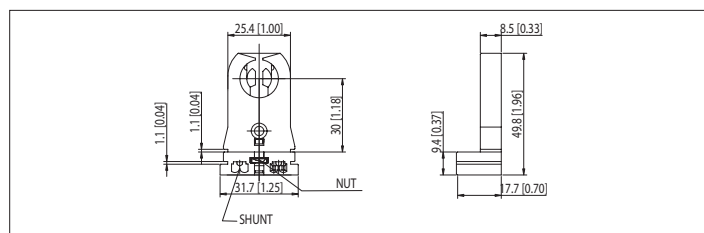
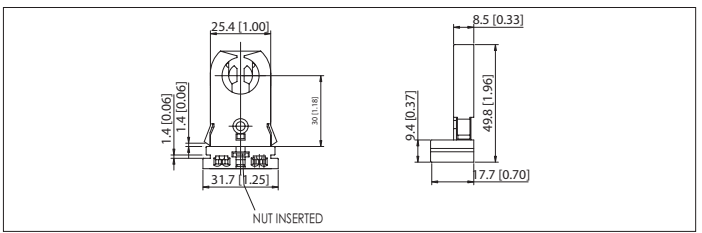
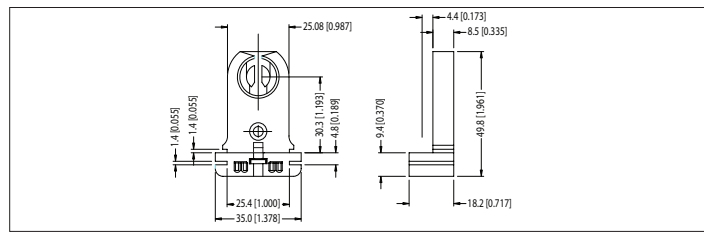
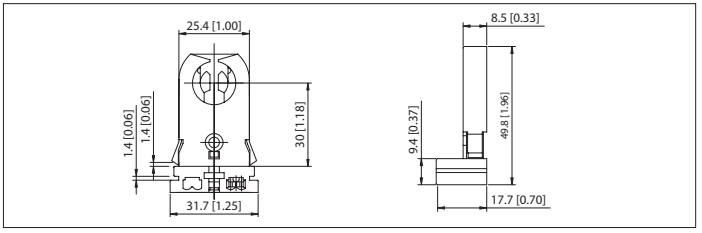
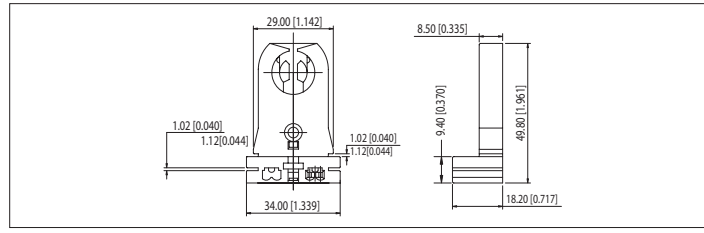
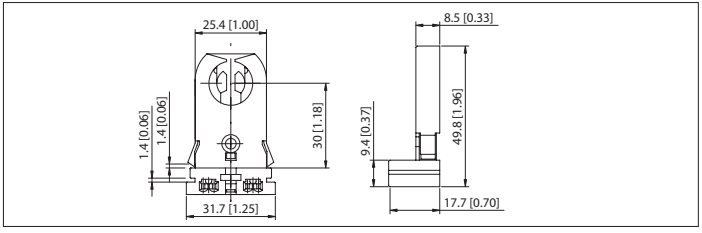
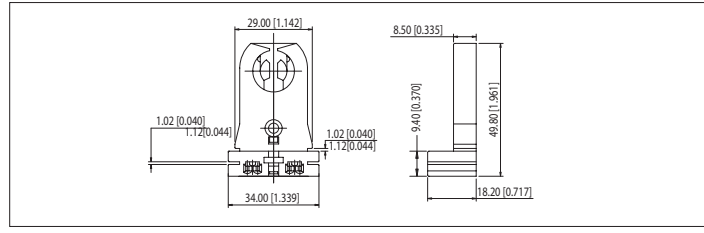
FL011 SERIES

<p>T-8 T-12</p>	<p>G13</p>	<ul style="list-style-type: none"> - White polycarbonate body, rated 110°C - Turn lock type, low profile - Quick connect push-in wire terminals for 18 AWG solid wire 5/16" - Two wire ports per terminal for easy harness wiring - For 0.23" - 0.040" (0.6 mm - 1.0 mm) panel thickness 	<ul style="list-style-type: none"> - Available shunted for use with instant start electronic ballasts; saves time and makes wiring easier - Many models to choose from - Rated 660W, 600V, suitable for all new HO lamps - cCSAus Certified / cULus Listed
---------------------	------------	---	--



LINEAR FLUORESCENT LAMPHOLDERS

T-8
T-12



* Add "-S" after product code for internal shunted version

FL011-WSC Flexible Snap-in Shoulder Shunted Captive Nut



FOR MORE INFORMATION PLEASE CALL 1-800-661-9610 (HEAD OFFICE) 1-888-762-5384 (USA)

PLEASE CONSULT THE FACTORY FOR MORE PRODUCTS AND CUSTOMIZATION. PRODUCT DETAILS AND SPECIFICATIONS ARE SUBJECT TO CHANGE WITHOUT NOTICE.